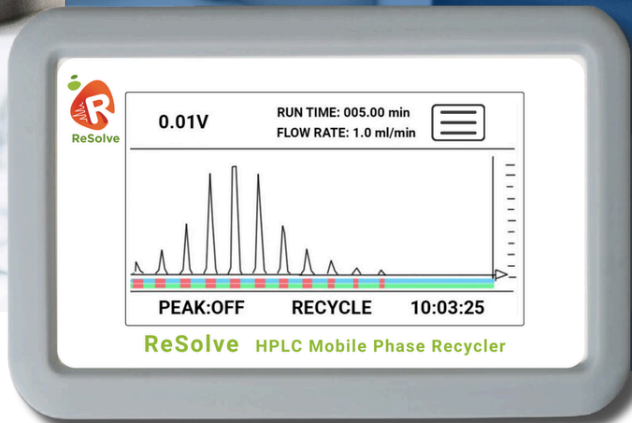


New Product

ReSolve

HPLC Mobile Phase Recycler



GMP compliance at its core

At a glance

ReSolve is an advanced HPLC Mobile Phase Recycler designed for GMP environments. It reduces solvent waste while maintaining analytical integrity. Its intelligent system monitors HPLC detector output to identify eluting peaks (contamination), ensuring that only pure solvent is recycled.

Key Features



Audit Trail - all Waste & Recycle events



>90% of mobile phase recycled



Connects to any HPLC system

CHALLENGES

In pharmaceutical labs, 100% of the HPLC mobile phase used in isocratic methods ends up as waste. This leads to:

- ✗ **Excessive Solvent Waste** - Traditional isocratic HPLC methods waste 85-95% of mobile phase.
- ✗ **High Costs** - Labs face increased solvent purchase & disposal expenses.
- ✗ **Environmental Impact** - Disposal of hazardous waste harms sustainability efforts.
- ✗ **Safety Risks** - Handling large solvent containers poses physical strain and spill risks.

SOLUTION

ReSolve intelligently monitors your HPLC detector output and recycles over 90% of your mobile phase, while ensuring sample integrity.

BENEFITS

- ✓ **Cost Savings** - Reduce solvent purchases and hazardous waste disposal costs
- ✓ **Lab Efficiency** - Minimise solvent prep time and streamline workflows
- ✓ **Safer Work Environment** - No more lifting heavy solvent bottles
- ✓ **Seamless Integration** - Compatible with all HPLC systems
- ✓ **Regulatory Compliance** - cGxP, FDA 21 CFR Part 11, ALCOA+, CE-certified

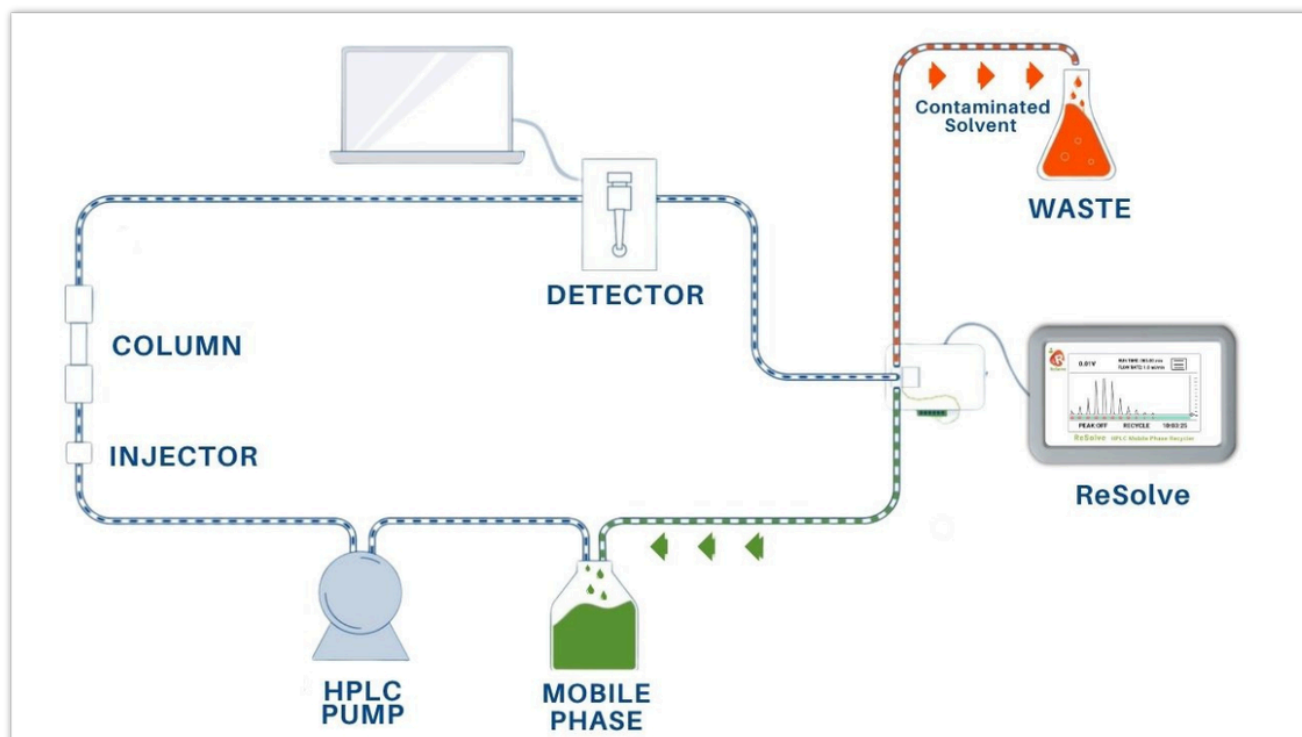
Patent Pending

ReSolve

How does it work?



ReSolve seamlessly integrates with any HPLC system, requiring minimal setup and no additional bench space. Once connected, it continuously monitors the mobile phase in real-time, using an advanced peak detection algorithm to analyse the detector output.



[Click here to watch the video](#) 

OPERATION



- 1 **Real-Time Contaminant Detection** - As your HPLC system runs, ReSolve carefully monitors the chromatogram to identify eluting peaks that contain sample contaminants.
- 2 **Automated Waste Diversion** - When a sample peak is detected, the system automatically diverts the contaminated solvent to the waste container, ensuring that no sample residues are reintroduced.
- 3 **Efficient Solvent Recycling** - Uncontaminated mobile phase, free from analytes and impurities, is returned directly to the pump reservoir for reuse in subsequent analyses.
- 4 **Smart Compliance & Monitoring** - A 4" touchscreen display provides live chromatogram updates, and all waste and recycle events are logged in an audit trail for full compliance with GMP, FDA 21 CFR Part 11, and ALCOA+ standards.

ReSolve Sample Report

ReSolve HPLC Solvent Recycler



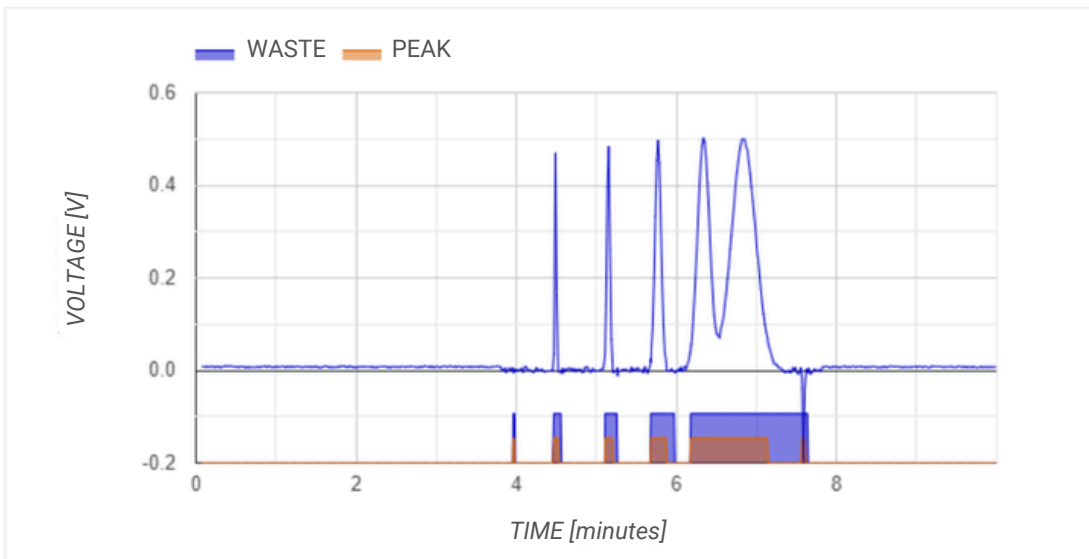
Injection Log

Company: ABC Pharma Corp
Laboratory: QC Lab
HPLC System: Resolve HPLC 2
Serial No: 242000002

Filename: Chromatogram_2025_01_08_12_11.pom
Injection Date & Time: 08-01-2025_12:11:16
User: AMurphy
Flow Rate: 2.00 ml/min
Runtime: 10.0 min
Delay: 0.00
Slope: 4500
Width: 12 s
Threshold: 0 mV

Mobile Phase to Waste Events

EVENT	From (mins)	To (mins)	Volume (ml)
WASTE 1	03.96	03.99	0.05
WASTE 2	04.47	04.56	0.19
WASTE 3	05.11	05.26	0.31
WASTE 4	05.68	05.98	0.60
WASTE 5	06.18	07.64	2.93
Volume to Waste			4.08
Volume Recycled			15.90
Percentage Recycled			80%



ReSolve

Technical Specification



Inputs	Injection start Detector output
Detector range	-1.000 to +2.000V
Screen	4" touchscreen - graphic display of live chromatogram and data input
Compliance	<p style="text-align: center;">21CFR part 11</p> <p>Administrator access: User admin, Peak Detection settings, Time/Date, Audit Trail PDF reports, Manual Waste and Signal Zero User access: Manual waste override and signal Zero, Run Time & Flow Rate</p> <p style="text-align: center;">Download reports of audit trails and all previous injections</p> <p style="text-align: center;">IQOQPQ documentation pack</p>
Divert valve	<p style="text-align: center;">2-way Teflon (PEEK option) zero dead volume 1/16" tubing 1/4 -28 ports</p> <p style="text-align: center;">Valve and tubing connections mounted to rear of detector</p>
Power	100 - 240V AC self switching
Operating Temperature	<p style="text-align: center;">10 - 40 °C 50 - 110 °F</p>